

# Ascend

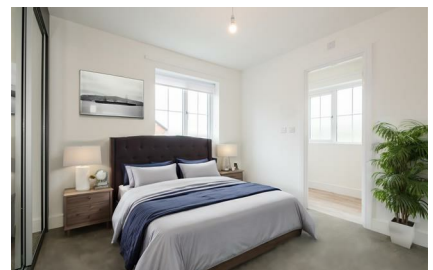
Built on higher standards



## 25 Stokers Drive Bolton BL6 5UE

- Secure-By-Design windows and doors
- Security alarm system
- Dishwasher
- Fridge freezer
- Washing/drying machine
- Oven and hob
- Fitted wardrobes
- Private back garden and patio

## £1,450 PCM



Barton Quarter is a fantastic development offering 2 and 3 bedroom build to rent homes, located in the heart of a triangle between Chorley, Wigan Bolton.

The Thespian is one to be desired with character and charm!

The picturesque frontage to the property has plenty of curb appeal. On the ground floor you have a kitchen dining area and a living area to the other side, both spanning the full side of the property. The kitchen dining has gorgeous French doors leading to your private back garden, whilst the living room boasts a beautiful bay window. You also benefit from a handy WC on the ground floor.

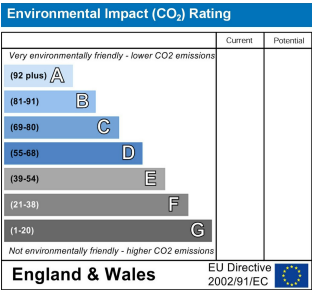
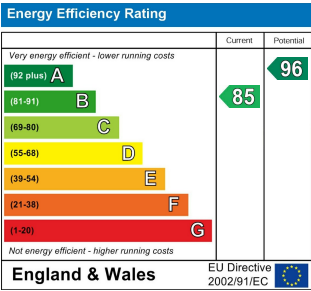
Upstairs, you will find three decent sized bedrooms. The main bedrooms comes with an ensuite, with an additional family bathroom situated at the end of the hallway.

All three local towns are only all six miles away, with Preston and Manchester both under 40 minutes' away via the nearby M61, Barton Quarter also makes the ideal commuter choice – and surrounded by wonderful local countryside, for achieving an enviable work-life balance too.

The new neighbourhood has excellent local shopping and leisure amenities within walking distance. Lots of local shops are available on your doorstep including an independent greengrocers, butchers and banks, Cooperative and Sainsbury's Local branches, pharmacy and post-office. You will also find Aldi and Iceland nearby, with Asda Supercentre and Tesco Extra at the Middlebrook Retail Park.

Access the site by using postcode BL6 5UE.

Deposit £1670  
Unfurnished



# Ascend

Built on higher standards

0161 707 7584

192 Monton Road, Monton, Manchester, M30 9PY

monton.sales@ascendproperties.com,  
monton.lettings@ascendproperties.com  
www.ascendproperties.com



These particulars, whilst believed to be accurate are set out as a general outline only for guidance and do not constitute any part of an offer or contract. Intending purchasers should not rely on them as statements of representation of fact, but must satisfy themselves by inspection or otherwise as to their accuracy. No person in this firm's employment has the authority to make or give any representation or warranty in respect of the property

